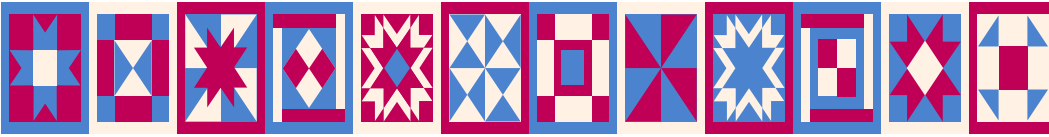
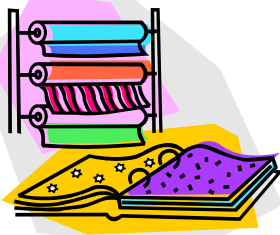


SELECTING FABRICS FOR QUILTING PROJECTS



When 4-H'ers make quilts, they are going to put a lot of time and effort into their project. It is important that they have appropriate fabric of a good quality. Poor fabric choices can lead to disappointment, no matter how high the quality of their workmanship.



To help 4-H'ers choose good fabrics for their quilts, bring a variety of fabrics to your club meeting and have them discuss the advantages and disadvantages of each. Have at least a few pieces that are appropriate for quilts. These would be 100% cotton, medium weight, plain weave.

Emphasize that quilt fabrics should be 100% cotton. Many fabrics that look a lot like cotton, have polyester in them. Polyester fabrics are great for some purposes, but not for quilts. They will cause puckers and wrinkles, and may not be

the same size when they go to sew them together as they were when they cut them. That is because of polyester's ability to "pop back". Have some cotton polyester blends on hand so 4-H'ers can begin to recognize the difference in the way they feel compared to 100% cotton.

If possible, have a fabric bolt on hand so they can read the label on the end of the bolt. They will find fiber content, brand name, width, and other information. Encourage them to always read the label.

Discuss the weight of the fabric. Heavier fabrics such as flannel, which is usually 100% cotton, may make nice quilts, but they are bulky and more difficult for beginning quilters to use. Synthetics such as rayon, acetate, and acrylic, and others, are more difficult to sew. They are sometimes used in art quilts by professionals, but are not recommended for 4-H'ers. Wool is a 100% natural fiber, but is bulky to sew and not often used in quilts.



Lighter weight fabrics, such as those named lawn, organdy, organza, and others, are not usually used in quilts unless for the technique known as shadow appliqué. They should not be used alone as the batting will show through. There are some light weight

cottons in the less expensive range that are also too thin to use for quilts as they don't hold their shape and also let the batting creep through between the fibers.

Quality quilt shops have beautiful quilt fabrics that are wonderful to use. They may be in an upper price range. If this is beyond the 4-H'ers budget, they can still make wonderful quilts from fabrics from discount stores if they make their selections carefully.

"QUILT FABRICS SHOULD BE 100% COTTON... HAVE SOME COTTON POLYESTER BLENDS ON HAND SO 4-H'ERS CAN BEGIN TO RECOGNIZE THE DIFFERENCE IN THE WAY THEY FEEL COMPARED TO 100% COTTON."

